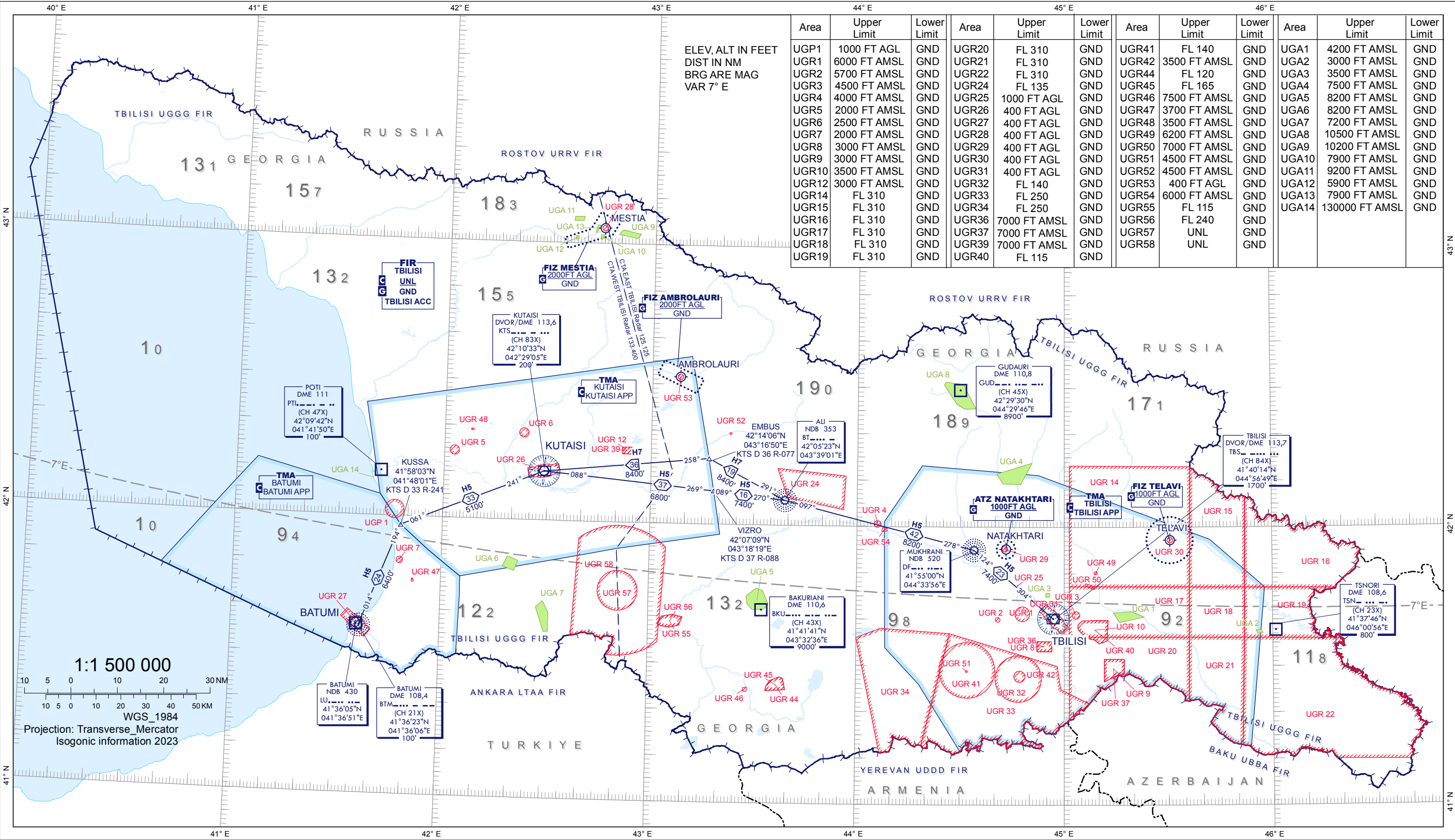


ENR 6 En-route Charts**ENR 6.1**

Chart Name	Page
Enroute chart - ICAO (Conventional navigation routes)	ENR 6-3
Enroute chart - ICAO (Area navigation RNAV routes)	ENR 6-5
Prohibited, restricted and aerial sporting areas chart - Index chart	ENR 6-7
Bird migration routes (spring) - Index chart	ENR 6-9
Bird migration routes (autumn) - Index chart	ENR 6-11
Free Route Airspace South Caucasus (FRASC) - Index chart	ENR 6-13-1
FRASC Lowest available level (LAL) sector's coordinates	ENR 6-13-3
FRASC Lowest available level (LAL) sector's coordinates (continuation)	ENR 6-13-5
Enroute ATC Surveillance Minimum Altitude chart - Index chart	ENR 6-15-1
Enroute ATCSMAC sector's coordinates	ENR 6-15-3
Enroute ATCSMAC sector's coordinates (continuation)	ENR 6-15-5

PAGE INTENTIONALLY LEFT BLANK

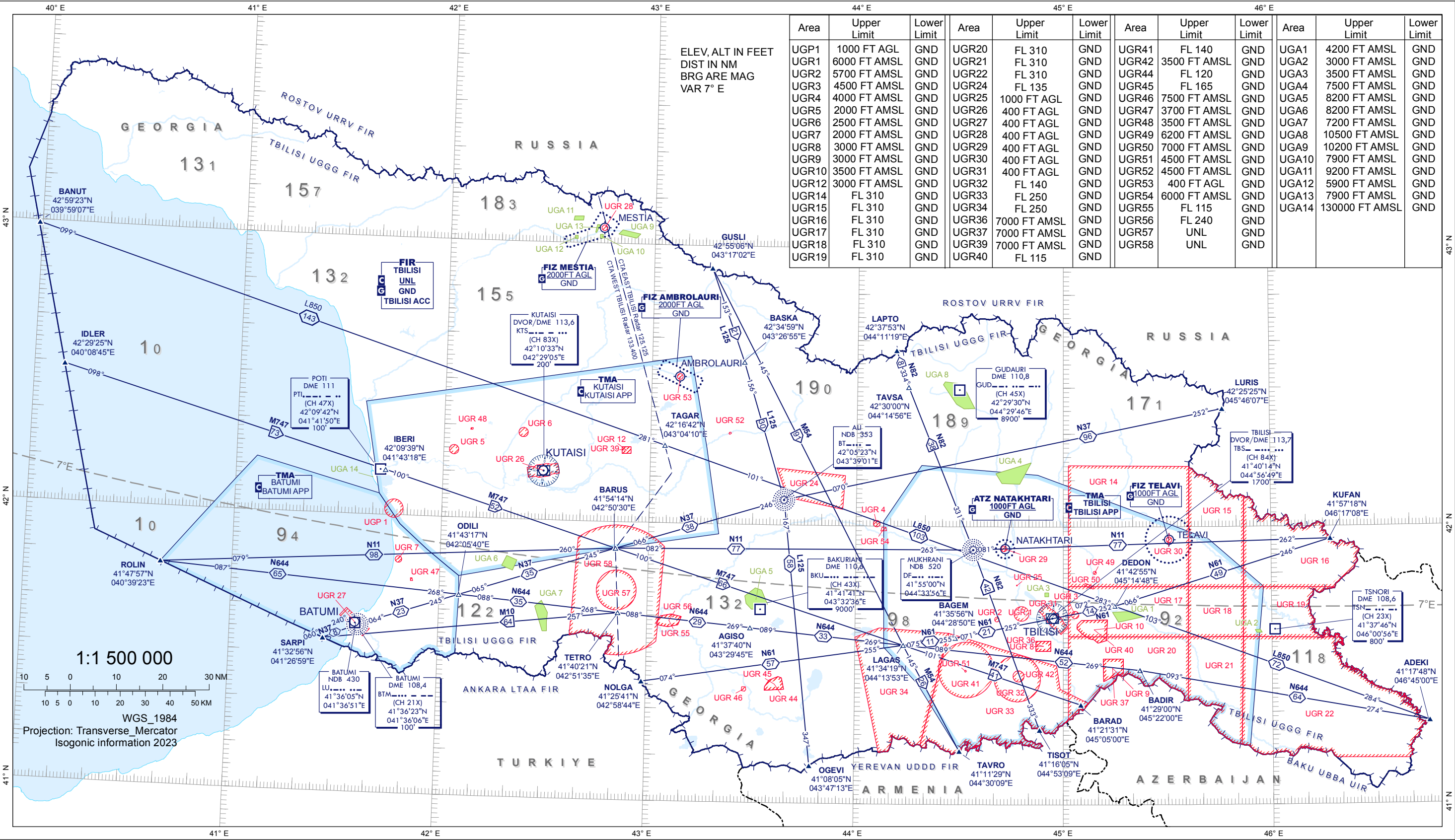
ENROUTE CHART - ICAO (Conventional navigation routes)



COMMUNICATION FACILITIES											
T B I L I S I ACC Tbilisi Radar		EAST UPPER Sector FL660		EAST LOWER Sector FL345/FL355/FL365/FL375		WEST UPPER Sector FL660		WEST LOWER Sector FL345/FL355/FL365/FL375		T B I L I S I	K U T A I S I
CTA EAST Primary - 125.125 Secondary - 135.125		CTA WEST Primary - 133.400 Secondary - 135.625		FL085 or 2000FT AGL whichever is higher Primary - 125.125 Secondary - 135.125		FL085 or 2000FT AGL whichever is higher Primary - 134.450 Secondary - 135.750		FL085 or 2000FT AGL whichever is higher Primary - 133.400 Secondary - 135.625		APP - 134.600 TWR Primary - 119.000 TWR Secondary - 128.000 INFO - 124.150 ATIS - 132.800	APP - 127.100 TWR - 125.500
										BATUMI	MESTIA
										APP - 124.425 TWR - 118.600	INFO - 121.100
										AMBROLAURI	NATAKHTARI
										INFO - 119.850	131.750
											TELAVI
											TWR-120.000

PAGE INTENTIONALLY LEFT BLANK

ENROUTE CHART - ICAO (Area navigation (RNAV) routes)



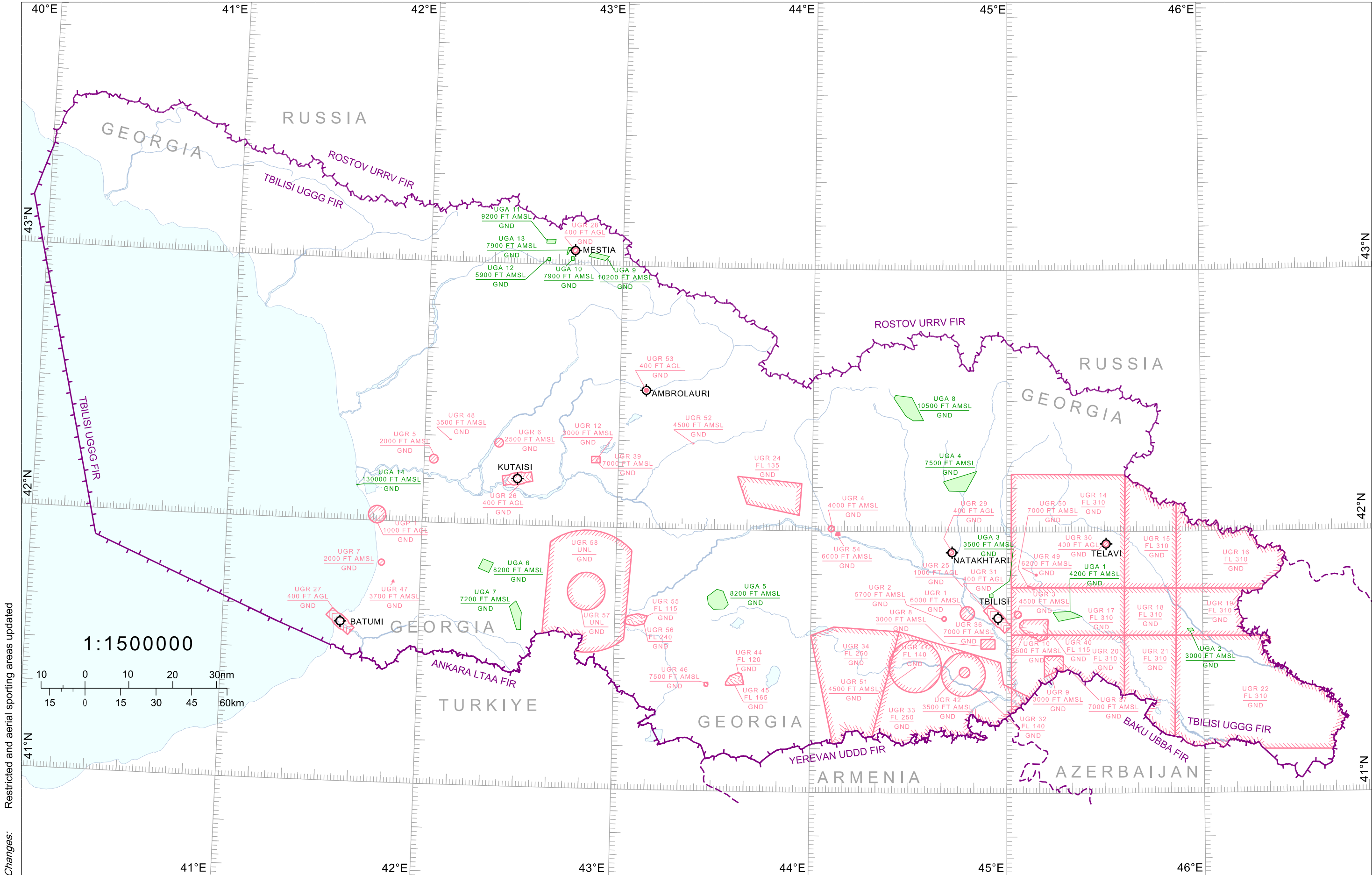
Area	Upper Limit	Lower Limit	Area	Upper Limit	Lower Limit	Area	Upper Limit	Lower Limit	Area	Upper Limit	Lower Limit
UGP1	1000 FT AGL	GND	UGR20	FL 310	GND	UGR41	FL 140	GND	UGA1	4200 FT AMSL	GND
UGR1	6000 FT AMSL	GND	UGR21	FL 310	GND	UGR42	3500 FT AMSL	GND	UGA2	3000 FT AMSL	GND
UGR2	5700 FT AMSL	GND	UGR22	FL 310	GND	UGR44	FL 120	GND	UGA3	3500 FT AMSL	GND
UGR3	4500 FT AMSL	GND	UGR24	FL 135	GND	UGR45	FL 165	GND	UGA4	7500 FT AMSL	GND
UGR4	4000 FT AMSL	GND	UGR25	1000 FT AGL	GND	UGR46	7500 FT AMSL	GND	UGA5	8200 FT AMSL	GND
UGR5	2000 FT AMSL	GND	UGR26	400 FT AGL	GND	UGR47	3700 FT AMSL	GND	UGA6	8200 FT AMSL	GND
UGR6	2500 FT AMSL	GND	UGR27	400 FT AGL	GND	UGR48	3500 FT AMSL	GND	UGA7	7200 FT AMSL	GND
UGR7	2000 FT AMSL	GND	UGR28	400 FT AGL	GND	UGR49	6200 FT AMSL	GND	UGA8	10500 FT AMSL	GND
UGR8	3000 FT AMSL	GND	UGR29	400 FT AGL	GND	UGR50	7000 FT AMSL	GND	UGA9	10200 FT AMSL	GND
UGR9	3000 FT AMSL	GND	UGR30	400 FT AGL	GND	UGR51	4500 FT AMSL	GND	UGA10	7900 FT AMSL	GND
UGR10	3500 FT AMSL	GND	UGR31	400 FT AGL	GND	UGR52	4500 FT AMSL	GND	UGA11	9200 FT AMSL	GND
UGR12	3000 FT AMSL	GND	UGR32	FL 140	GND	UGR53	400 FT AGL	GND	UGA12	5900 FT AMSL	GND
UGR14	FL 310	GND	UGR33	FL 250	GND	UGR54	6000 FT AMSL	GND	UGA13	7900 FT AMSL	GND
UGR15	FL 310	GND	UGR34	FL 250	GND	UGR55	FL 115	GND	UGA14	130000 FT AMSL	GND
UGR16	FL 310	GND	UGR36	7000 FT AMSL	GND	UGR56	FL 240	GND			
UGR17	FL 310	GND	UGR37	7000 FT AMSL	GND	UGR57	UNL	GND			
UGR18	FL 310	GND	UGR39	7000 FT AMSL	GND	UGR58	UNL	GND			
UGR19	FL 310	GND	UGR40	FL 115	GND						

COMMUNICATION FACILITIES

T B I L I S I ACC Tbilisi Radar	EAST UPPER Sector FL660	EAST LOWER Sector FL345/FL355/FL365/FL375	WEST UPPER Sector FL660	WEST LOWER Sector FL345/FL355/FL365/FL375	T B I L I S I APP - 134.600 TWR Primary - 119.000 TWR Secondary - 128.000 INFO - 124.150 ATIS - 132.800	K U T A I S I APP - 127.100 TWR - 125.500	B A T U M I APP - 124.425 TWR - 118.600	M E S T I A INFO - 121.100	A M B R O L A U R I INFO - 119.850	N A T A K H T A R I 131.750	T E L A V I TWR-120.000
CTA EAST Primary - 125.125 Secondary - 135.125	CTA WEST Primary - 133.500 Secondary - 135.350	FL345/FL355/FL365/FL375 FL085 or 2000FT AGL whichever is higher Primary - 125.125 Secondary - 135.125	FL345/FL355/FL365/FL375 Primary - 134.450 Secondary - 135.750	FL345/FL355/FL365/FL375 FL085 or 2000FT AGL whichever is higher Primary - 133.400 Secondary - 135.625							

PAGE INTENTIONALLY LEFT BLANK

PROHIBITED, RESTRICTED AND AERIAL SPORTING AREAS CHART - INDEX CHART



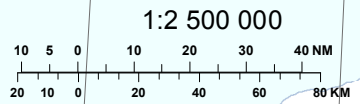
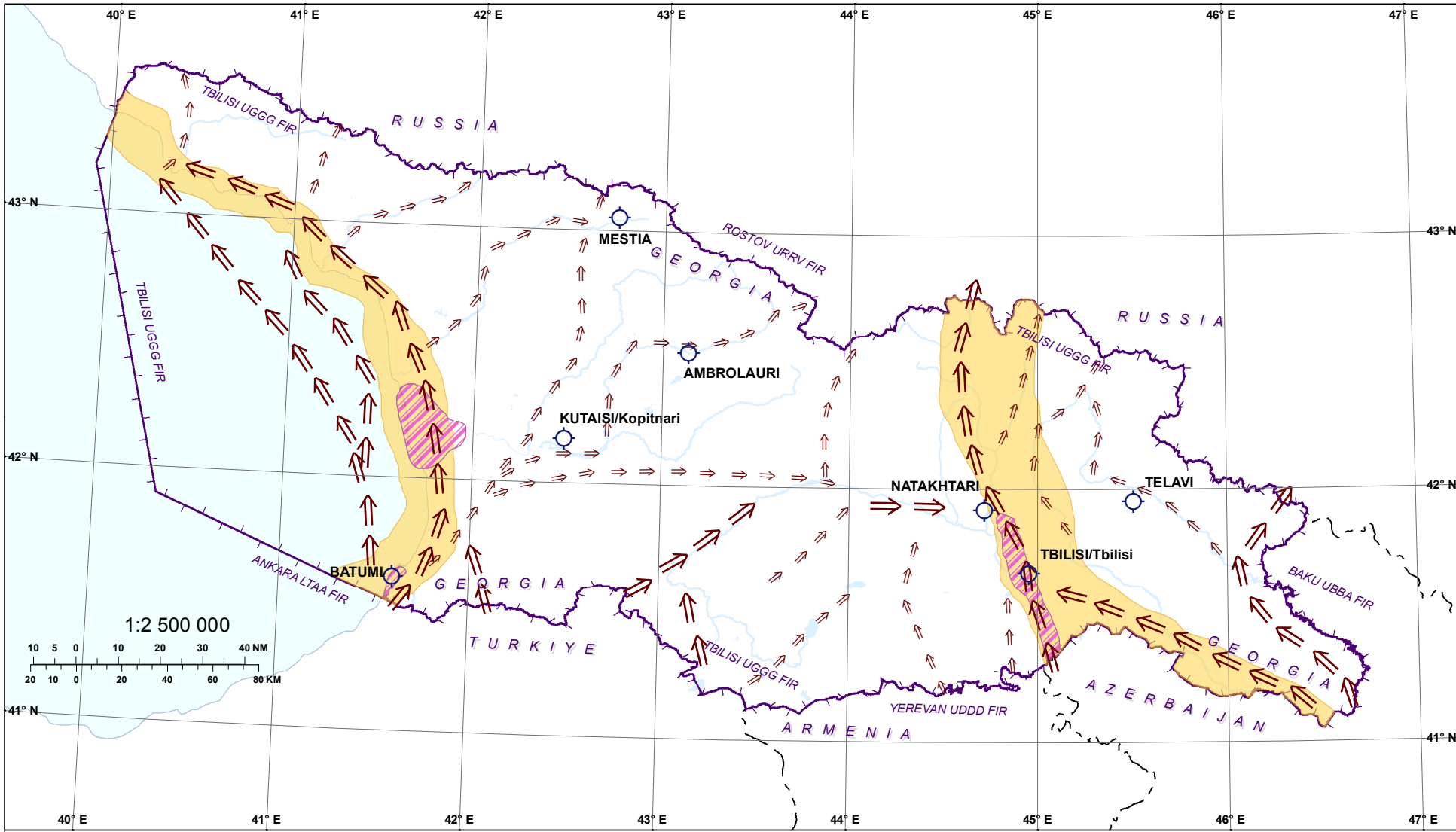
Changes: Restricted and aerial sporting areas updated

PAGE INTENTIONALLY LEFT BLANK

BIRD MIGRATION ROUTES (SPRING)

Changes: Chart reissued

© Georgian Air Navigation - Sakaeronavigatsia Ltd.



⇒ ⇒ Spring Migration

Bird Concentration Area (Autumn, Winter, Spring)

Main migration corridor

Aerodrome

--- Boundary

FIR

Legend

AIRAC AIP AMDT 05/25

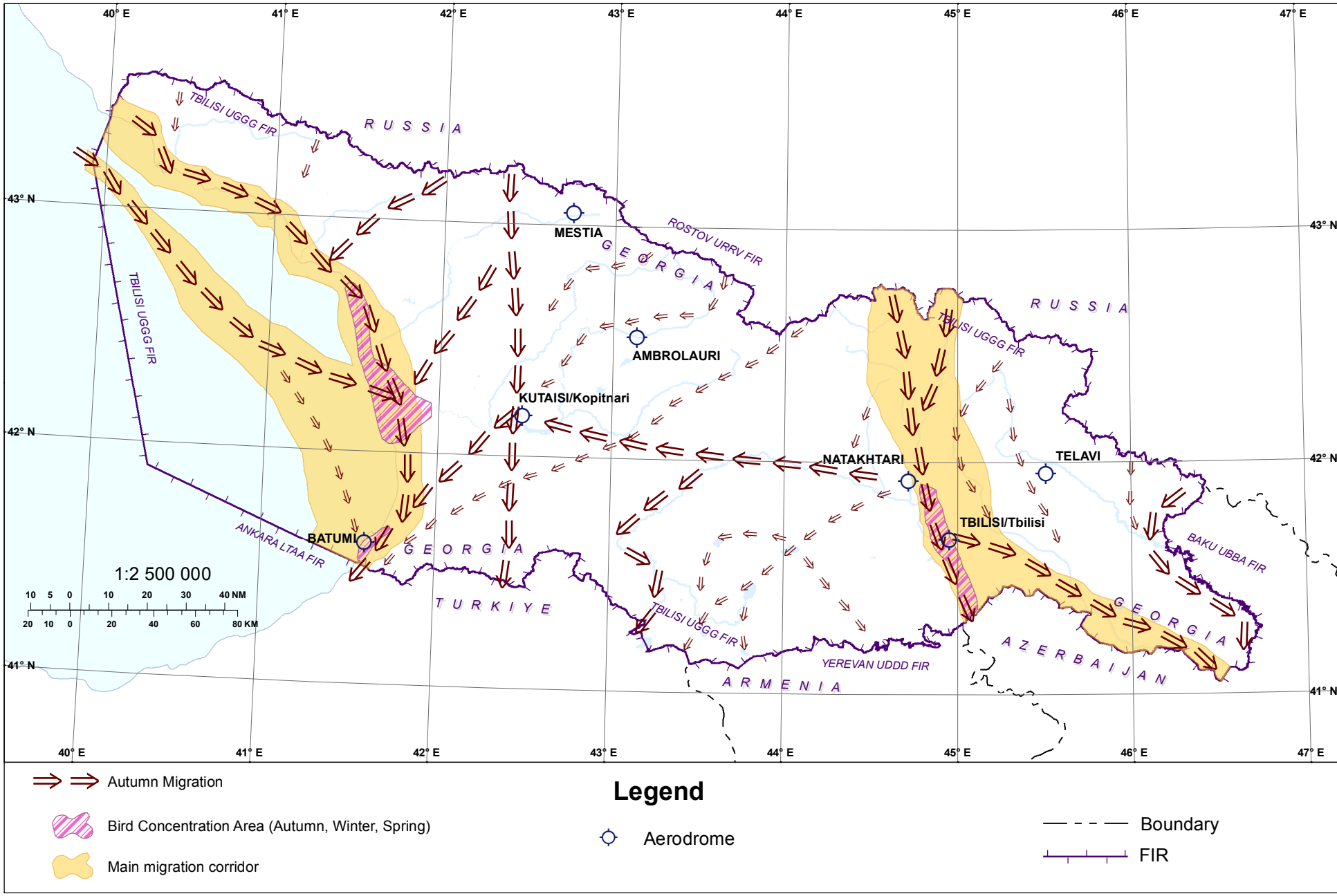
PAGE INTENTIONALLY LEFT BLANK

BIRD MIGRATION ROUTES (AUTUMN)

Changes: Chart reissued

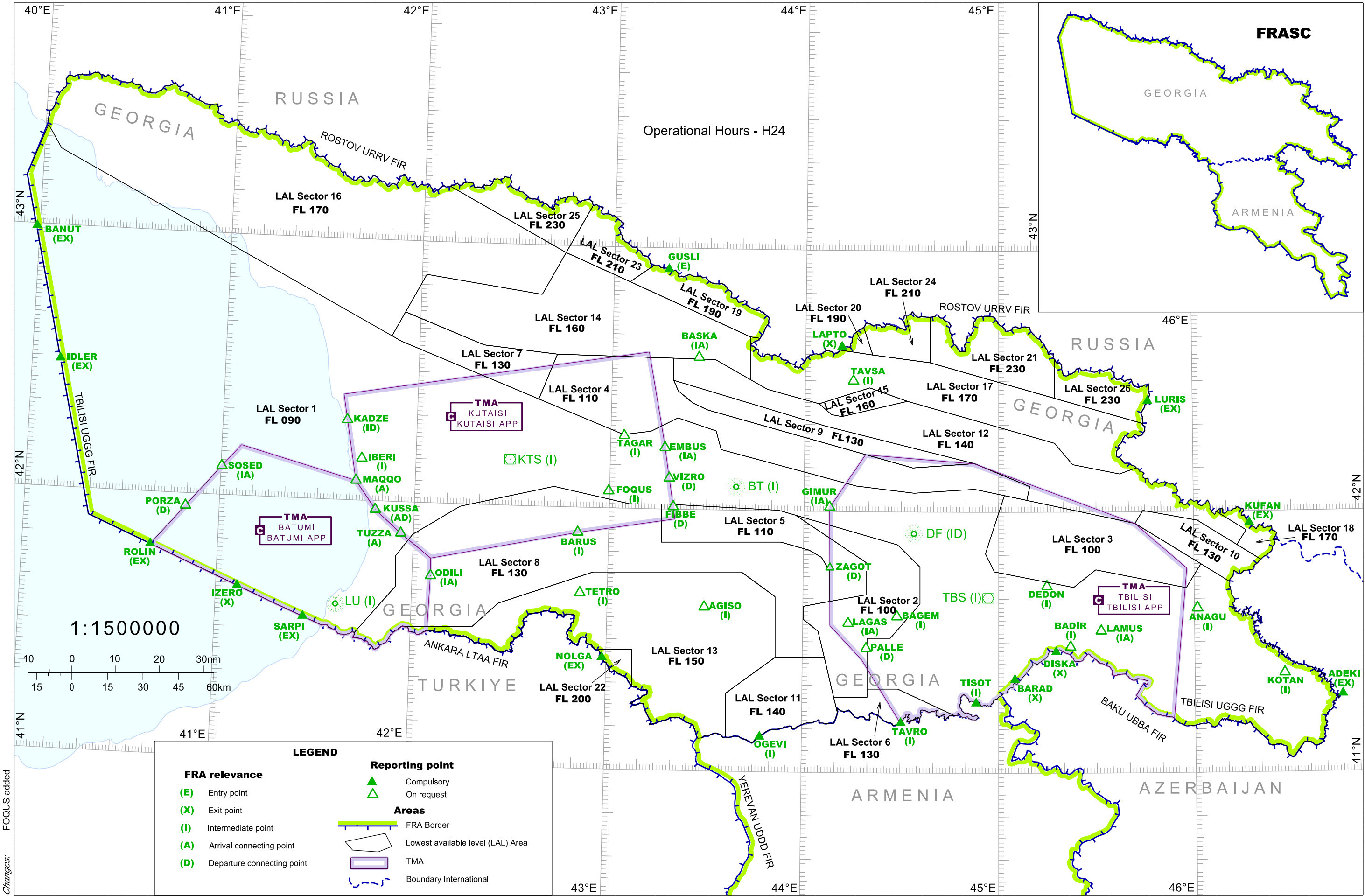
©Georgian Air Navigation - Sakaeronavigatsia Ltd.

AIRAC AIP AMDT 05/25



PAGE INTENTIONALLY LEFT BLANK

FREE ROUTE AIRSPACE SOUTH CAUCASUS (FRASC) - INDEX CHART



PAGE INTENTIONALLY LEFT BLANK

FRASC Lowest Available Level (LAL) Sectors' Coordinates

Sector	Lateral limits
LAL Sector 1	413100N 0413300E - 413600N 0411700E - 415400N 0402000E - 431100N 0395500E - 432236N 0400048E - 431723N 0400517E - 423757N 0415113E - 423646N 0415418E - 422435N 0423724E - 421653N 0430357E - 421747N 0431222E - 422058N 0432040E - 421809N 0433231E - 421352N 0433413E - 420553N 0441607E - 420420N 0443356E - 420517N 0445232E - 420349N 0450147E - 415027N 0445556E - 414618N 0445842E - 414242N 0452300E - 414642N 0452950E - 414226N 0455734E - 414754N 0460208E - 414346N 0461053E - then along the state border with Azerbaijan to - 4118N 04501E -then along the state border with Armenia to - 411320N 0444622E - 411918N 0442911E - 411915N 0441950E - 413057N 0441943E - 413059N 0442651E - 413853N 0443554E - 414721N 0443551E - 415226N 0442856E - 415430N 0441913E - 415903N 0435727E - 420008N 0435210E - 420110N 0431601E - 420101N 0430617E - 420436N 0424253E - 415925N 0421406E - 415236N 0415949E - 414731N 0415445E - 414034N 0415505E - 412933N 0414259E -then along the state border with Turkiye - 413100N 0413300E
LAL Sector 2	415903N 0435727E - 415430N 0441913E - 415226N 0442856E - 414721N 0443551E - 413853N 0443554E - 413059N 0442651E - 413057N 0441943E - 411915N 0441950E - 411721N 0441951E - 411717N 0440943E - 412627N 0440643E - 413227N 0440444E - 413510N 0440008E - 413809N 0440005E - 413920N 0440816E - 414056N 0441922E - 414820N 0441917E - 415903N 0435727E
LAL Sector 3	420349N 0450147E - 420244N 0450841E - 415720N 0454158E - 414754N 0460208E - 414226N 0455734E - 414642N 0452950E - 414242N 0452300E - 414618N 0445842E - 415027N 0445556E - 420349N 0450147E
LAL Sector 4	423458N 0424250E - 423441N 0431857E - 422935N 0431905E - 422711N 0432036E - 422429N 0432506E - 422257N 0432944E - 421008N 0443329E - 421111N 0445232E - 420553N 0450936E - 420244N 0450841E - 420349N 0450147E - 420517N 0445232E - 420420N 0443356E - 420553N 0441607E - 421352N 0433413E - 421809N 0433231E - 422058N 0432040E - 421747N 0431222E - 421653N 0430357E - 422435N 0423724E - 423458N 0424250E
LAL Sector 5	420110N 0431601E - 420008N 0435210E - 415903N 0435727E - 414820N 0441917E - 414056N 0441922E - 413920N 0440816E - 414617N 0440811E - 414927N 0440532E - 415104N 0440145E - 415250N 0435255E - 415223N 0431615E - 420110N 0431601E
LAL Sector 6	411344N 0441053E - 411717N 0440943E - 411721N 0441951E - 411915N 0441950E - 411918N 0442911E - 411320N 0444622E - then along the state border with Armenia to - 411344N 0441053E
LAL Sector 7	424334N 0415510E - 423637N 0421958E - 423458N 0424250E - 422435N 0423724E - 423646N 0415418E - 423757N 0415113E - 424334N 0415510E
LAL Sector 8	412933N 0414259E - 414034N 0415505E - 414731N 0415445E - 415236N 0415949E - 415925N 0421406E - 420436N 0424253E - 420101N 0430617E - 420110N 0431601E - 415223N 0431615E - 415250N 0435255E - 415104N 0440145E - 414927N 0440532E - 414617N 0440811E - 413920N 0440816E - 413809N 0440005E - 413510N 0440008E - 413227N 0440444E - 412627N 0440643E - 412619N 0435141E - 414016N 0435126E - 414552N 0434101E - 414511N 0425535E - 413727N 0422643E - 413151N 0421851E - 413122N 0415858E - then along the state border with Turkiye - 412933N 0414259E
LAL Sector 9	422935N 0431905E - 421939N 0440608E - 421111N 0445232E - 421008N 0443329E - 422257N 0432944E - 422429N 0432506E - 422711N 0432036E - 422935N 0431905E
LAL Sector 10	414346N 0461053E - 414754N 0460208E - 415720N 0454158E - 420018N 0454426E - 415755N 0460110E - 415213N 0461316E - 414847N 0462030E - then along the state border with Azerbaijan to - 414346N 0461053E
LAL Sector 11	410752N 0433651E - 411752N 0433639E - 412619N 0435141E - 412627N 0440643E - 411717N 0440943E - 411344N 0441053E - then along the state border with Armenia - 410752N 0433651E

For continuation see ENR 6-13-5

PAGE INTENTIONALLY LEFT BLANK

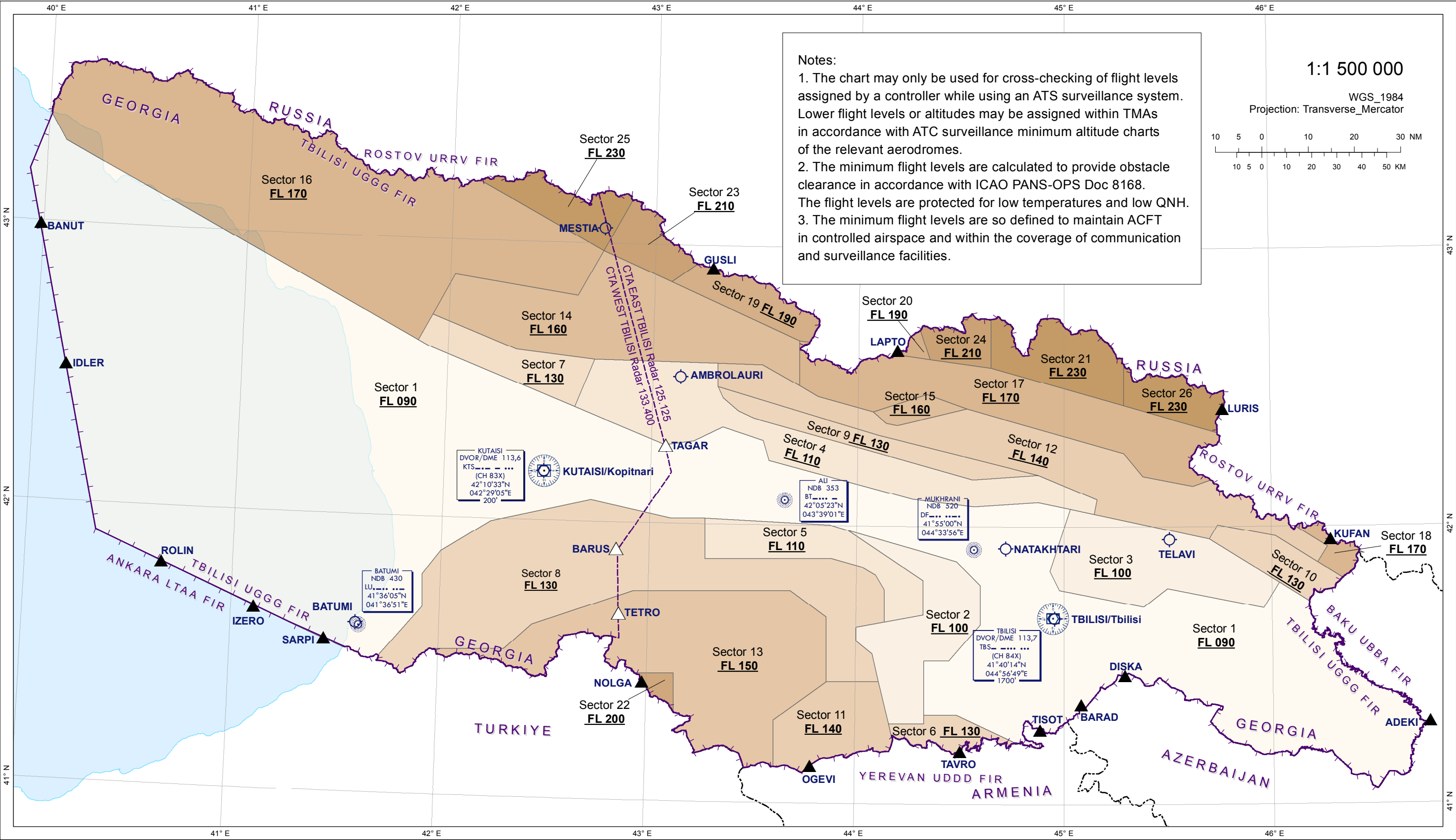
FRASC Lowest Available Level (LAL) Sectors' Coordinates (Continuation)

Sector	Lateral limits
LAL Sector 12	415952N 0460704E - 415536N 0461608E - 415213N 0461316E - 415755N 0460110E - 420018N 0454426E - 415720N 0454158E - 420244N 0450841E - 420553N 0450936E - 421111N 0445232E - 421939N 0440608E - 422935N 0431905E - 423441N 0431857E - 423432N 0433156E - 423004N 0434253E - 422751N 0434818E - 422443N 0440421E - 422214N 0440813E - 422149N 0441126E - 422526N 0443143E - 421550N 0451719E - 421054N 0452252E - 420843N 0453720E - 421005N 0454230E - then along the state border with Russia - 415952N 0460704E
LAL Sector 13	413122N 0415858E - 413151N 0421851E - 413727N 0422643E - 414511N 0425535E - 414552N 0434101E - 414016N 0435126E - 412619N 0435141E - 411752N 0433639E - 410752N 0433651E - then along the state border with Armenia to - 4107N 04328E - then along the state border with Turkiye to - 411915N 0430803E - 412738N 0430749E - 412727N 0425641E - then along the state border with Turkiye to - 413122N 0415858E
LAL Sector 14	425821N 0424441E - 425201N 0430454E - 423953N 0434241E - 423004N 0434253E - 423432N 0433156E - 423441N 0431857E - 423458N 0424250E - 423637N 0421958E - 424334N 0415510E - 425220N 0420123E - 424835N 0423733E - 425821N 0424441E
LAL Sector 15	422443N 0440421E - 422829N 0442001E - 422526N 0443143E - 422149N 0441126E - 422214N 0440813E - 422443N 0440421E
LAL Sector 16	431243N 0420754E - 425821N 0424441E - 424835N 0423733E - 425220N 0420123E - 424334N 0415510E - 423757N 0415113E - 431723N 0400517E - 432236N 0400048E - 432300N 0400100E - then along the state border with Russia to - 431243N 0420754E
LAL Sector 17	423705N 0441046E - 423602N 0442052E - 423418N 0443843E - 422610N 0451722E - 422017N 0454433E - then along the state border with Russia to - 421005N 0454230E - 420843N 0453720E - 421054N 0452252E - 421550N 0451719E - 422526N 0443143E - 422829N 0442001E - 422443N 0440421E - 422751N 0434818E - 423004N 0434253E - 423953N 0434241E - 423935N 0434543E - then along the state border with Russia to - 423705N 0441046E
LAL Sector 18	414847N 0462030E - 415213N 0461316E - 415536N 0461608E - 415952N 0460704E - then along the state border with Russia to - 4155N 04625E - then along the state border with Azerbaijan - 414847N 0462030E
LAL Sector 19	423935N 0434543E - 423953N 0434241E - 425201N 0430454E - 425554N 0431214E - then along the state border with Russia to - 423935N 0434543E
LAL Sector 20	424223N 0441758E - 423602N 0442052E - 423705N 0441046E - then along the state border with Russia to - 424223N 0441758E
LAL Sector 21	423505N 0451725E - 422610N 0451722E - 423418N 0443843E - 424446N 0443840E - then along the state border with Russia to - 423505N 0451725E
LAL Sector 22	412727N 0425641E - 412738N 0430749E - 411915N 0430803E - then along the state border with Turkiye to - 412727N 0425641E
LAL Sector 23	430923N 0425248E - 425821N 0424441E - 425201N 0430454E - 425554N 0431214E - then along the state border with Russia to - 430923N 0425248E
LAL Sector 24	424446N 0443840E - 423418N 0443843E - 423602N 0442052E - 424223N 0441758E - then along the state border with Russia to - 424446N 0443840E
LAL Sector 25	430923N 0425248E - 425821N 0424441E - 431243N 0420754E - then along the state border with Russia to - 430923N 0425248E
LAL Sector 26	422017N 0454433E - 422610N 0451722E - 423505N 0451725E - then along the state border with Russia to - 422017N 0454433E

PAGE INTENTIONALLY LEFT BLANK

ENROUTE ATC SURVEILLANCE MINIMUM ALTITUDE CHART

G E O R G I A



LEGEND

COMMUNICATION FACILITIES

Aerodrome	NDB	VOR/DME	FIR	Boundary (International)	TBILISI ACC Tbilisi Radar CTA EAST Primary - 125.125 Secondary - 135.125 CTA WEST Primary - 133.400 Secondary - 135.625	EAST UPPER Sector FL660 FL345/FL355/FL365/FL375 Primary - 133.500 Secondary - 135.350 EAST LOWER Sector FL345/FL355/FL365/FL375 FL85 or 2000FT AGL whichever is higher Primary - 125.125 Secondary - 135.125	WEST UPPER Sector FL660 FL345/FL355/FL365/FL375 Primary - 134.450 Secondary - 135.750 WEST LOWER Sector FL345/FL355/FL365/FL375 FL85 or 2000FT AGL whichever is higher Primary - 133.400 Secondary - 135.625	TBILISI APP - 134.600 TWR Primary - 119.000 TWR Secondary - 128.000 INFO - 124.150 ATIS - 132.800	KUTAISSI APP - 127.100 TWR - 125.500 BATUMI APP - 124.425 TWR - 118.600	MESTIA INFO - 121.100 AMBROLAURI INFO - 119.850 NATAKHTARI 131.750 TELAVI TWR-120.000
-----------	-----	---------	-----	--------------------------	---	---	---	---	--	--

PAGE INTENTIONALLY LEFT BLANK

ENROUTE ATCSMAC Sectors' Coordinates

Sector	Lateral limits
Sector 1	413100N 0413300E - 413600N 0411700E - 415400N 0402000E - 431100N 0395500E - 432236N 0400048E - 431723N 0400517E - 423757N 0415113E - 423646N 0415418E - 422435N 0423724E - 421653N 0430357E - 421747N 0431222E - 422058N 0432040E - 421809N 0433231E - 421352N 0433413E - 420553N 0441607E - 420420N 0443356E - 420517N 0445232E - 420349N 0450147E - 415027N 0445556E - 414618N 0445842E - 414242N 0452300E - 414642N 0452950E - 414226N 0455734E - 414754N 0460208E - 414346N 0461053E - then along the state border with Azerbaijan to - 4118N 04501E - then along the state border with Armenia to - 411320N 0444622E - 411918N 0442911E - 411915N 0441950E - 413057N 0441943E - 413059N 0442651E - 413853N 0443554E - 414721N 0443551E - 415226N 0442856E - 415430N 0441913E - 415903N 0435727E - 420008N 0435210E - 420110N 0431601E - 420101N 0430617E - 420436N 0424253E - 415925N 0421406E - 415236N 0415949E - 414731N 0415445E - 414034N 0415505E - 412933N 0414259E - then along the state border with Turkiye - 413100N 0413300E
Sector 2	415903N 0435727E - 415430N 0441913E - 415226N 0442856E - 414721N 0443551E - 413853N 0443554E - 413059N 0442651E - 413057N 0441943E - 411915N 0441950E - 411721N 0441951E - 411717N 0440943E - 412627N 0440643E - 413227N 0440444E - 413510N 0440008E - 413809N 0440005E - 413920N 0440816E - 414056N 0441922E - 414820N 0441917E - 415903N 0435727E
Sector 3	420349N 0450147E - 420244N 0450841E - 415720N 0454158E - 414754N 0460208E - 414226N 0455734E - 414642N 0452950E - 414242N 0452300E - 414618N 0445842E - 415027N 0445556E - 420349N 0450147E
Sector 4	423458N 0424250E - 423441N 0431857E - 422935N 0431905E - 422711N 0432036E - 422429N 0432506E - 422257N 0432944E - 421008N 0443329E - 421111N 0445232E - 420553N 0450936E - 420244N 0450841E - 420349N 0450147E - 420517N 0445232E - 420420N 0443356E - 420553N 0441607E - 421352N 0433413E - 421809N 0433231E - 422058N 0432040E - 421747N 0431222E - 421653N 0430357E - 422435N 0423724E - 423458N 0424250E
Sector 5	420110N 0431601E - 420008N 0435210E - 415903N 0435727E - 414820N 0441917E - 414056N 0441922E - 413920N 0440816E - 414617N 0440811E - 414927N 0440532E - 415104N 0440145E - 415250N 0435255E - 415223N 0431615E - 420110N 0431601E
Sector 6	411344N 0441053E - 411717N 0440943E - 411721N 0441951E - 411915N 0441950E - 411918N 0442911E - 411320N 0444622E - then along the state border with Armenia to - 411344N 0441053E
Sector 7	424334N 0415510E - 423637N 0421958E - 423458N 0424250E - 422435N 0423724E - 423646N 0415418E - 423757N 0415113E - 424334N 0415510E
Sector 8	412933N 0414259E - 414034N 0415505E - 414731N 0415445E - 415236N 0415949E - 415925N 0421406E - 420436N 0424253E - 420101N 0430617E - 420110N 0431601E - 415223N 0431615E - 415250N 0435255E - 415104N 0440145E - 414927N 0440532E - 414617N 0440811E - 413920N 0440816E - 413809N 0440005E - 413510N 0440008E - 413227N 0440444E - 412627N 0440643E - 412619N 0435141E - 414016N 0435126E - 414552N 0434101E - 414511N 0425535E - 413727N 0422643E - 413151N 0421851E - 413122N 0415858E - then along the state border with Turkiye - 412933N 0414259E
Sector 9	422935N 0431905E - 421939N 0440608E - 421111N 0445232E - 421008N 0443329E - 422257N 0432944E - 422429N 0432506E - 422711N 0432036E - 422935N 0431905E
Sector 10	414346N 0461053E - 414754N 0460208E - 415720N 0454158E - 420018N 0454426E - 415755N 0460110E - 415213N 0461316E - 414847N 0462030E - then along the state border with Azerbaijan to - 414346N 0461053E
Sector 11	410752N 0433651E - 411752N 0433639E - 412619N 0435141E - 412627N 0440643E - 411717N 0440943E - 411344N 0441053E - then along the state border with Armenia - 410752N 0433651E

For continuation see ENR 6-15-5

PAGE INTENTIONALLY LEFT BLANK

ENROUTE ATCSMAC Sectors' Coordinates (Continuation)

Sector	Lateral limits
Sector 12	415952N 0460704E - 415536N 0461608E - 415213N 0461316E - 415755N 0460110E - 420018N 0454426E - 415720N 0454158E - 420244N 0450841E - 420553N 0450936E - 421111N 0445232E - 421939N 0440608E - 422935N 0431905E - 423441N 0431857E - 423432N 0433156E - 423004N 0434253E - 422751N 0434818E - 422443N 0440421E - 422214N 0440813E - 422149N 0441126E - 422526N 0443143E - 421550N 0451719E - 421054N 0452252E - 420843N 0453720E - 421005N 0454230E - then along the state border with Russia - 415952N 0460704E
Sector 13	413122N 0415858E - 413151N 0421851E - 413727N 0422643E - 414511N 0425535E - 414552N 0434101E - 414016N 0435126E - 412619N 0435141E - 411752N 0433639E - 410752N 0433651E - then along the state border with Armenia to - 4107N 04328E - then along the state border with Turkiye to - 411915N 0430803E - 412738N 0430749E - 412727N 0425641E - then along the state border with Turkiye to - 413122N 0415858E
Sector 14	425821N 0424441E - 425201N 0430454E - 423953N 0434241E - 423004N 0434253E - 423432N 0433156E - 423441N 0431857E - 423458N 0424250E - 423637N 0421958E - 424334N 0415510E - 425220N 0420123E - 424835N 0423733E - 425821N 0424441E
Sector 15	422443N 0440421E - 422829N 0442001E - 422526N 0443143E - 422149N 0441126E - 422214N 0440813E - 422443N 0440421E
Sector 16	431243N 0420754E - 425821N 0424441E - 424835N 0423733E - 425220N 0420123E - 424334N 0415510E - 423757N 0415113E - 431723N 0400517E - 432236N 0400048E - 432300N 0400100E - then along the state border with Russia to - 431243N 0420754E
Sector 17	423705N 0441046E - 423602N 0442052E - 423418N 0443843E - 422610N 0451722E - 422017N 0454433E - then along the state border with Russia to - 421005N 0454230E - 420843N 0453720E - 421054N 0452252E - 421550N 0451719E - 422526N 0443143E - 422829N 0442001E - 422443N 0440421E - 422751N 0434818E - 423004N 0434253E - 423953N 0434241E - 423935N 0434543E - then along the state border with Russia to - 423705N 0441046E
Sector 18	414847N 0462030E - 415213N 0461316E - 415536N 0461608E - 415952N 0460704E - then along the state border with Russia to - 4155N 04625E - then along the state border with Azerbaijan - 414847N 0462030E
Sector 19	423935N 0434543E - 423953N 0434241E - 425201N 0430454E - 425554N 0431214E - then along the state border with Russia to - 423935N 0434543E
Sector 20	424223N 0441758E - 423602N 0442052E - 423705N 0441046E - then along the state border with Russia to - 424223N 0441758E
Sector 21	423505N 0451725E - 422610N 0451722E - 423418N 0443843E - 424446N 0443840E - then along the state border with Russia to - 423505N 0451725E
Sector 22	412727N 0425641E - 412738N 0430749E - 411915N 0430803E - then along the state border with Turkiye to - 412727N 0425641E
Sector 23	430923N 0425248E - 425821N 0424441E - 425201N 0430454E - 425554N 0431214E - then along the state border with Russia to - 430923N 0425248E
Sector 24	424446N 0443840E - 423418N 0443843E - 423602N 0442052E - 424223N 0441758E - then along the state border with Russia to - 424446N 0443840E
Sector 25	430923N 0425248E - 425821N 0424441E - 431243N 0420754E - then along the state border with Russia to - 430923N 0425248E
Sector 26	422017N 0454433E - 422610N 0451722E - 423505N 0451725E - then along the state border with Russia to - 422017N 0454433E

PAGE INTENTIONALLY LEFT BLANK